

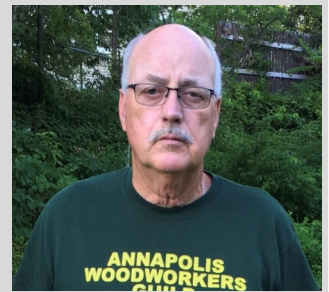
Colonial Woodcutter

Annapolis Woodworkers Guild

November 2020

Virtual “Zoom” Meeting November 12th at 7:00 pm

AWG President’s Message



Hello Guild members,

Not a whole lot to talk about this month, We are still hoping that the woodworking shows in January will go on as scheduled and more vendors will sign up to do the show even though the Covid virus is showing an uptick in numbers. Let’s hope they will have a vaccine soon to eradicate this thing and we can get some normalcy back in our lives. This months tidbit is about glue squeeze out, if you glue up a project and want to see if you have any glue squeeze out before you put your finish on it shine a black light over it and that will highlight your glue spots. You can also use a black light if you have a pet to see if you have any urine stains on your carpet— pet urine will shine brightly.

We are still trying to fill the First V.P. Position. If you are willing to help support the Guild in this, or another open position, please let us know.

— Bruce Mitchell

Announcements

November Virtual Meeting!

Thursday, November 12th

7:00 pm

Please join us for our November “virtual” meeting of the Guild. Please also consider contributing to the “show-n-tell” portion by contacting Chris Desautels at: Christopher.desautels@gmail.com or 301-332-8490.

November’s Speaker will be Chuck Engstrom



Chuck’s first exposure to woodworking involved construction of a photographic contact printer under the guidance of his father. Now some sixty years and many varied projects later, he has put his focus on woodturning and has displayed his work in almost a dozen venues in Maryland. He has also demonstrated at the Smithsonian’s Renwick Gallery in Washington and for several local clubs, and most recently he curated a Woodworkers’ Showcase exhibition for RiverArts Gallery in Chestertown.

For the past eight years he has been the principal woodturning instructor at Maryland Hall for the Creative Arts in Annapolis, and has been gratified to help revive interest in woodturning there through Maryland Hall’s Woodturning Co-op, which gives aspiring turners access to their good facilities. COVID had for some time shut down the regular classes that he was working with, but the Co-op has since reopened and has seen good activity from its members. Chuck also occasionally instructs at the Woodcraft store in New Castle, Delaware.

Over the years Chuck has been a member of the American Association of Woodturners, Chesapeake Woodturners, and Montgomery County Woodturners.

A Zoom link will be sent on the day of the meeting to each Guild member we have on file. Simply click on that link a few minutes prior to the meeting time to activate your Zoom session.

Volunteers Needed for Woodworking Show

By Candee Van Iderstine (show coordinator)

As of now, the Wood Show held at the Timonium Fairgrounds is still on for January 8-10, 2021 so we are planning accordingly. We expect that there will be fewer people at this show because of the pandemic. We will also be following all health rules and procedures; social distancing and mask wearing will be expected. We will have hand sanitizer at the booth.

Here is what we expect the Guild booth to look like: for our booth display items, we anticipate having toys on one side with a sign about our volunteer efforts (Any photos will be appreciated). We are planning to downsize the table at the front of the booth. We will include some larger items, our peg board, and display cabinet (please email me with what you would be willing to have on display). We will not have a children's build space, but instead we will have scroll saw demonstrations, thanks to Paul Dodson. In the area with the scroll saw, there will be a large screen that will show images or videos of members and/or speakers when scroll saw demos are not in progress. In order to make this happen, we will need a projector. *(If you have a projector that you can loan, please contact Candee)*

We have space at this show based on our past participation. If we elect to participate this year we will need members to help with set up, help staff the booth during the show and help tear down the display at the end of the show. With expected smaller crowds, we are planning to only have two AWG members staff the booth during a shift and the shifts will be shortened to two hours duration. Sign-ups will be managed by email. Please let me know what shift you are willing to staff:

Projected Schedule of Events

Set up will be Friday morning, (January 8th) from 8AM-11:30AM.

Friday, (January 8th) shifts are 12N-2PM, 2PM-4PM, 4PM-6PM

Saturday, (January 9th) shifts are 9:30AM-11:30AM, 11:30-1:30, 1:30-3:30, 3:30-6:00. (2.5 hrs for last shift)

Sunday, (January 10th) shifts are 10AM-12N, 12N-3PM (3 hrs for last shift, but place is empty so we start packing up)

Tear down is Sunday (January 10th) from 3PM until completion and then traditionally we go to dinner (dutch) at a nearby restaurant.

Please email me at candeevani@gmail.com by **November 21st** with your preferred shift day and time. All volunteers get into the show at no cost and can visit the show before and after their shift. You are welcome to sign up for more than one day or shift and please consider signing up to help us set up and tear down. Once we are set up, workers get to go around and see the other exhibits for about ½ hr before the show starts! The tear down crew gets to make offers to vendors for discount prices. I've gotten some really nice birdseye maple that way. Vendors don't want to load up and carry off more than they have to! (Maybe this time I'll finally get that drum sander I've been wanting).

If you have something you want to display at the booth: I can meet individuals at the church to pick up smaller booth display items, or you can bring them to my house. If you have a larger item for display, some board members are willing and able to transport it to and from the show. I can help coordinate. Of course we will also be displaying items from the contest. What contest, you ask? Keep reading!!! And thank you in advance for all your time, energy and participation in so many ways.

Please remember two things: one, this event is a huge recruiting tool for the guild and two, we can only do this if we have sufficient volunteers.

RSVP to Candee Van Iderstine

candeevani@gmail.com By November 21

2020 AWG Woodworking Contest

2020 Second Annual Woodworking Contest — by Candee Van Iderstine

The subjects of last year's contest were wood turning and box making. I was blown away with all the talent and all the beautiful pieces that were entered. In my opinion, every entrant was a winner. This year we will also have two separate contests. The first contest will feature "Fine Blade Work". This includes: band saw work, scroll saw creations, inlay work, intarsia and anything else that is made with a fine blade. The second contest will feature "Holiday Themed Work". This can be something you make for gifts or something that honors a specific holiday.

Rules: Each item can only be entered in one contest. Mixed media items are acceptable but the item must be made by the member and be at least 50% made out of wood. The item must have been made in the last two years. Items previously brought to show and tell are acceptable. Anyone who is an active member of the guild can enter or can request to judge. The contest will be judged on Zoom on Saturday, December 5th at 7PM by at least 5 AWG members who have not entered either contest or by members of the public agreed upon by at least 4 Board members. The entry must be available to be shown on Zoom by the maker or someone they designate on December 5th. Judges decisions will be final. Items must be available for display if the Wood show January 8-10 is not cancelled (I expect we will know by December 5 if the show is cancelled or not).

How to Enter: You must enter by sending an email to candeevani@gmail.com or a text message to 240-485-7165 by December 3rd with a single photo of the item, the category for the entry (fine blade or holiday themed) and your name and best phone number to reach you. If you can't send a message or email, ask someone for help (I'm not sure you should be operating power tools)! You will need to be able to display/demonstrate any features of your work at the time of judging.

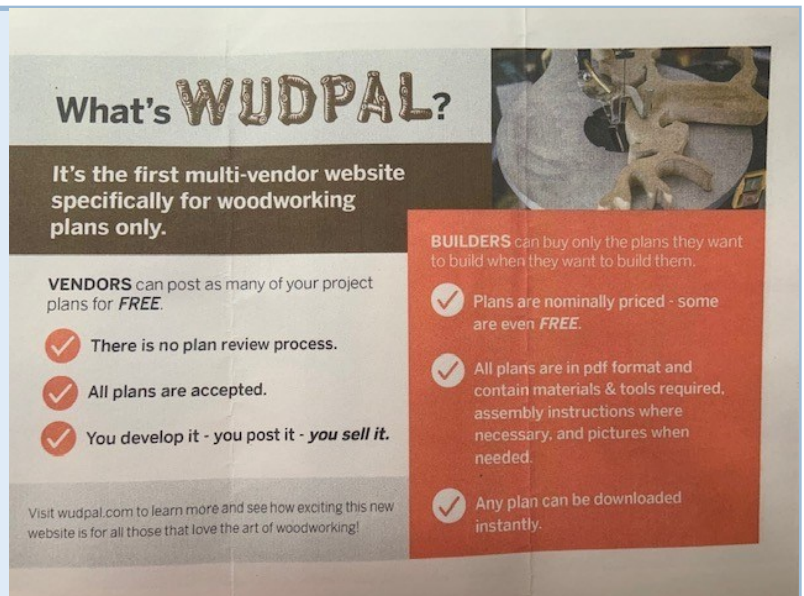
Prizes: There will be a first place and second place in each category. First place winners will receive \$50.00 each and second place winners will receive \$25.00 each. I will try to come up with a trophy of some kind as well but no promises at this point. If anyone wants to volunteer to make or design some trophies or plaques, that would be appreciated.

NOW GET TO WORK, CREATE, AND MAKE ME PROUD - *Candee Van Iderstine*

WUDPAL woodworking plans site

Rick Hodgdon passes along the following information he recently received:

If you try this service, please send along a review—Ed.



What's **WUDPAL**?

It's the first multi-vendor website specifically for woodworking plans only.

VENDORS can post as many of your project plans for **FREE**.

- ✓ There is no plan review process.
- ✓ All plans are accepted.
- ✓ You develop it - you post it - **you sell it.**

Visit wudpal.com to learn more and see how exciting this new website is for all those that love the art of woodworking!

BUILDERS can buy only the plans they want to build when they want to build them.

- ✓ Plans are nominally priced - some are even **FREE**.
- ✓ All plans are in pdf format and contain materials & tools required, assembly instructions where necessary, and pictures when needed.
- ✓ Any plan can be downloaded instantly.

I would like to take this opportunity to introduce a new woodworking website called **WUDPAL** to you & your organization.

WUDPAL is the first multi vendor website that specializes in woodworking plans only. No finished projects are sold on the website although we do allow designers (vendors) that want to sell finished projects that they can tell the buyers how to do that via a separate venue. Vendors are allowed to post any project plan that they've created. There is no review or censorship. There are no restrictions on what kind of plans can be posted other than that they include wood. Most of them are craft projects but we welcome larger item plans indoor or outdoor like furniture, accessories, etc. & wood carving plans.

WUDPAL was developed to promote the joy of woodworking for designers & builders so it will appeal to everyone - beginner to expert. **WUDPAL** allows for the "one & done" designer to get exposure to their plan indefinitely by an unlimited audience & builders to shop for, buy & build only the project that they want. Buyers can shop the entire website inventory or filter their search by project category or by vendor.

I invite you to visit the **WUDPAL.COM** website to get a better sense of its comprehensiveness, variety & ease of shopping. I hope that you can circulate this ad which is currently running in the current issue of ScrollSaw Woodworking & Crafts magazine & post it in your wood shops as well as mention it at your meetings.

Thank you for everything you do to keep woodworking alive & well. If you have any questions, please don't hesitate to contact me.

Regards,
Bill Miller

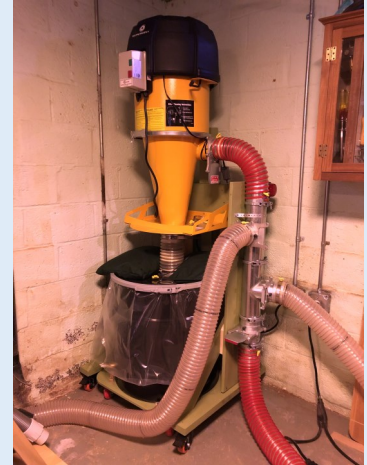
Tool Review

Out with the Old, In with the New A review of the Oneida SuperCell Dust Collector

By
Chris Desautels



Old (Oneida V-3000)



New (Oneida SuperCell)

I recently replaced the dust collector in my wood shop. My old one, an Oneida V-3000 was a very effective but it had some disadvantages. It was too big for my small shop and cleaning its filter was a difficult and disgusting job that probably did not endear me to my neighbors. (The only effective way to clean it was to take it into the back yard and go at it with a leaf blower until the billowing clouds of sawdust petered out).

When I bought the V-3000, it was the best option for my shop at the time. Cyclones are the most effective dust collectors and the selection of cyclones at the time was rather limited. In the years since many manufacturers have released designs more suited to the small shop and I'd been thinking about replacing it for some time before I finally took the plunge with the Oneida SuperCell.

The performance of dust collectors are measured by two metrics: Cubic Feet per Minute (CFM) and Static Pressure. Basically, these metrics measure the volume of air moved and the velocity at which it moves. Dust collectors have traditionally focused on CFM. Moving lots of air is a very effective way of yanking sawdust away from a machine. But high CFM means a big honking impeller. So that means a big machine. Also, dust collectors have, relatively speaking, low static pressure and every change of direction (bends and turns) in the ducts robs the flow of static pressure. Flex hose is particularly greedy in this regard. That's why in a good dust collector system so much attention is paid to the design of the ductwork. If the pressure drops too low in a duct the dust settles to the bottom of the duct and all the CFM in the world won't make a difference.

Fixed ductwork is often not practical for small shops and mine is the poster child for this problem. All the machines are on wheels and 4 machines share two hoses. That means lots of flex hose.

(Continued next page)

Review/Odds and Ends

(Oneida SuperCell continued)

The SuperCell is a radically rethought design intended for shops like mine. It has decent CFM, but nothing to write home about, 485 CFM, My old system had 1100. But the SuperCell has astronomically high static pressure, 10 times what units of comparable power have. So drops in pressure due to ductwork has a negligible effect on its performance. It also has a radical new way of cleaning the filter. There's a lever on the side of the machine that reverses the flow of air. Close the main blast gate, hit the lever about 5 times and the filter is blasted clean by that all that enormous pressure - and the pressure is truly insane. The first time I closed the gate and turned the machine on, the suction yanked the 35 gallon steel drum off the floor with so much force that the bang against the bottom of the machine startled me something fierce, and my wife on the floor above nearly jumped out of her skin. I called up Oneida and they told me, "oh, that's normal. It means you have a tight system".

So if you look at the picture, you'll see two bags on top of the drum. Those are 25 lb bags of steel shot. To hold the bin down when I clean the filter.

The SuperCell dust collector is sold in 3 configurations. A 55 gallon drum, a 35 gallon drum or one that has a rolling cart with a 17 gallon drum. Configurations without the rolling cart are meant to be attached directly to a wall. I didn't want to do that, but I also didn't want the small drum. So I built my own cart for the 35 gallon system.

The SuperCell does have one disadvantage. It's loud. Dust collectors are not known for being quiet and this one is most definitely not an exception, but I'm still pretty happy with it. No longer will I be hostage to the bi-annual cleaning of the filter and no longer is my shop dominated by a behemoth in the corner.

Mission Accomplished!

Paul Dodson has been working on a clock project for some time (pun intended).

Here is a good example of what a pandemic sequestration can produce (other than headaches, weight gain, paranoia....).

Simply fantastic, Paul!



Odds and Ends

Loyal contributor Jim Francis sends along a tip in chamfering small pieces like he encountered during recent construction of a chess/checker board (*excellent gift idea—Ed.*)

Here is how I safely cut the chamfer:

I first resawed my walnut and maple to about $\frac{3}{8}$ inch thick and 18+ inches long. I then ran all through my drum sander, sanding to $\frac{1}{4}$ inch thickness.

I used my table saw to cut all long working pieces of each wood type to $1\frac{7}{8}$ wide. Then I set up a chamfer bit in my router table and ran the router along all long edges (2 sides) to chamfer two edges.

To crosscut the pieces, I attached a one inch block on my fence & set the fence for a $2\frac{7}{8}$ inch cut. The one inch block safely allowed the cut pieces to fall away from the blade. Before cutting the final squares I cut test pieces and used a micrometer to ensure length and width were equal. I built a U-shaped carrier jig to hold five squares at a time and ran the newly cut edges through my router chamfer bit.



Candee Van Inderstine sends the following review of Hamilton and Ross Millwork:

Hamilton and Ross Millwork is located in Annapolis at 1811 Virginia St, Annapolis, MD 21401 off Chinquapin Round Road.(ph: 410-739-6400). The owner Steve recently helped me out with a board I wanted to use that was twisted. I have a jointer, but I really don't seem to get good results with it. I took the rough cut wood to him and for a very reasonable price, he jointed and planed it perfectly. The good: price was reasonable and the owner said he enjoys jobs like this. The not-so-good: He said he would have it ready in a few days but actually took 2 weeks.



This month's plank: Figured Maple. Just viewing a piece of highly figured Maple can get the mental sap running! Go make something!

Seen this one before?? Maybe your editor is becoming a robot??.....

Are You a Robot??

Do you feel a little like you are becoming a ROBOT these days???
Take this simple AWG-Certified test to see:

Select all Images with

SOFTWOOD

Verify your selections below



Verify

*If you just pushed the above non working verify button, then you've likely become a robot.
If you happen to wear a mask, however, all bets are off— robots don't wear masks*

Mentors and Problem Solution

Want to learn a new skill? AWG has many member-mentors to help you. See the list below to contact one.

Have a vexing woodworking problem? There may be many other members with the same situation. AWG has a “problem box” where you can anonymously place your problem or question for discussion and possible solutions at the next meeting. You will find the box at a table near the meeting hall entrance door.

AWG Member Mentors

Last Name	First Name	Phone	E-mail	Mentor Subject
Ames	Don	410-268-0509	dfames@verizon.net	Use and maintenance of Edge Tools (planes, chisels, scrapers)
Applegate	Patrick	410-426-8287	patrick__applegate@comcast.net	Finishing with Shellac (brushed and padded)
Arndt	Michael	410-960-3239	MarylandWoodPro@gmail.com	General wood finishing and finish restoration/repair
Ashby	Bob	410-969-2910	toolsrus58@comcast.net	Shapers, router tables and tooling for same
Borland	Andy	410-647-1242	AHBorland@aol.com	Box making
Chavez	Harry	410-863-5940	harry.chavez@gmail.com	Intarsia
Dodson	Paul	410-760-5382	pdwoodcrafts@verizon.net	Scroll saws and scrolling
Harvey	Dennis	240-463-4641	denharv@aol.com	Pen making
Hirrlinger	Jack	410-798-1339	tjhirr@verizon.net	Toys, tricks and puzzles
Luck	Jim	410-647-6622	jfl639@verizon.net	Inlay and shaker boxes
McDonald	Chris	410-326-1685	cmcdonald@thewavaz.com	Cabinets

Administration

AWG OFFICERS (June 2019 —May 2020 Term)

President – Bruce Mitchell

1st Vice President – Open

2nd Vice President – Bob Ashby

Secretary – Jim Menefee

Treasurer – Vince Antonioli

Tour Coordinator – Open

Program Chairperson – Chris Desautels and

Phil Christenson

Newsletter Editor – Carl Wick

Historian - Jim Francis

Endowment Coordinator – Bill Carbin

Entertainment Coordinator – Paul Dodson

Show Coordinator– Candee Van Iderstine

Show & Tell Coordinator – Bill Carbin

Special Projects Coordinator – Open

Membership Chairperson – Tom Dettweiler

Librarian—Lloyd Gleason

Charity Coordinator—Andy Borland

Webmaster— Tyler Quevedo

Education Chair—Rick Hodgdon

MEMBERSHIP and MEETINGS

Membership is open to all interested Woodworkers.

Annual Dues: New Members Joining between Jan and June: \$50; joining between July and Sept \$25; Free between Oct and Jan, but be sure to “re-up” the following year!

General Membership Meetings:

2nd Thursday of each month 7 PM

Virtual Video Meetings UFN

Executive Board Meetings:

3rd Thursday of the Month at 7 PM

By phone/video UFN

contact a board member for invitation

All are welcome at board meetings

CONTACT INFORMATION

Correspondence:

Annapolis Woodworkers Guild

P.O. Box 6001

Annapolis, MD 21401

Website:

Annapoliswoodworkers.org

The following vendors support AWG



Würth Wood Group, 6660 Santa Barbara Road, Elkridge, MD 21075

410-796-7600 WWW.Wurthwoodgroup.com



Hartville Tools, Hartville, OH

800-345-2396 WWW.Hartvilletool.com



Exotic Lumber Company, 1610 Whitehall Road, Annapolis, MD 21409

410-349-1705 WWW.Exoticlumber.com



Somerset Door and Column Company, 174 Sagamore Street, Somerset, PA 15501

800-242-7916 WWW.Doorandcolumn.com

The following vendors support AWG



Brusso Hardware LLC, 67-69 Greylock Avenue, Belleville, NJ 07109

212-337-8510 WWW.Brusso.com



Klingspor 2555 Tate Boulevard Southeast, Hickory, NC 28603

800-645-5555 WWW.Klingspor.com



American Woodcrafters Supply 212 East Main, Box G, Riceville, IA 50466

800-995-4032 WWW.Americanwoodcrafterssupply.com



Lake Erie Toolworks 1234 Irwin Drive, Erie, PA 16505

815-528-4337 WWW.LakeErieToolworks.com/Pages/Club

10% Online Discount Code: **AWG10**